



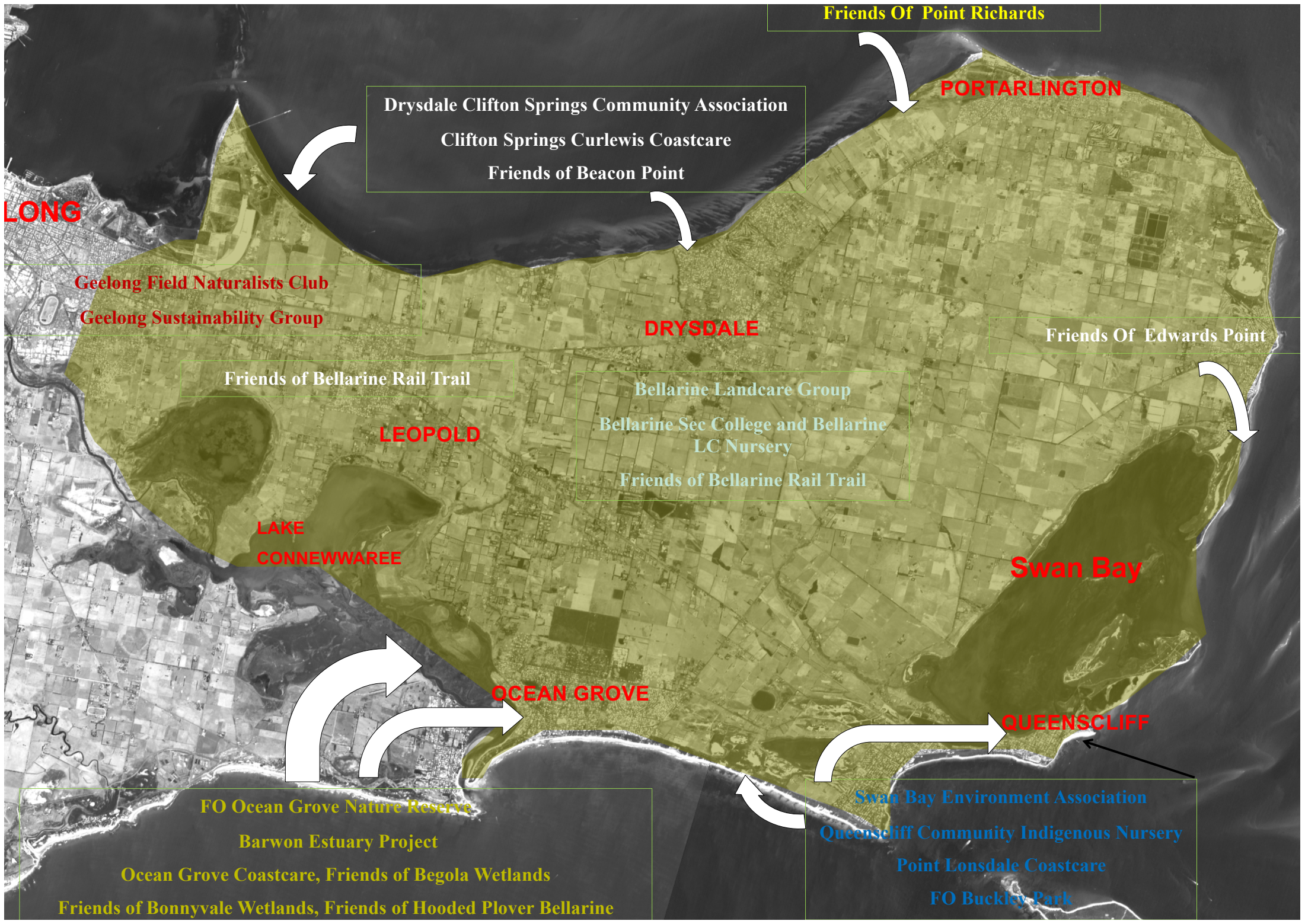
Integrated, Innovative Natural Resource Management

~ Integrated Representation ~

Friends of Edwards Point
Bellarine Landcare Group
Friends of Buckley Park
Swan Bay Environment Association
Friends of Begola Wetlands
Ocean Grove Coastcare Group
Friends of Point Richards
Greening Australia
Conservation Volunteers Australia
Point Lonsdale Coastcare Group
Friends of Beacon Point
Clifton Springs Curlewis Coastcare Group
Barwon Estuary Project
Friends of the Hooded Plover Bellarine

Friends of the Bellarine Rail Trail
City of Greater Geelong
Borough of Queenscliffe
Coastcare Victoria - DELWP
Parks Victoria
Corangamite CMA
Barwon Coast COM
Bellarine Bayside COM
Friends of the Ocean Grove Nature Reserve
Drysdale Clifton Springs Community Association
Geelong Sustainability Group
Geelong Field Naturalists Club
Orange Bellied Parrot Working Group





Friends Of Point Richards

Drysdale Clifton Springs Community Association
Clifton Springs Curlewis Coastcare
Friends of Beacon Point

GEELONG

Geelong Field Naturalists Club
Geelong Sustainability Group

Friends of Bellarine Rail Trail

LEOPOLD

DRYSDALE

Bellarine Landcare Group
Bellarine Sec College and Bellarine
LC Nursery
Friends of Bellarine Rail Trail

Friends Of Edwards Point

LAKE
CONNEWAREE

Swan Bay

OCEAN GROVE

QUEENSCLIFF

FO Ocean Grove Nature Reserve

Barwon Estuary Project

Ocean Grove Coastcare, Friends of Begola Wetlands

Friends of Bonnyvale Wetlands, Friends of Hooded Plover Bellarine

Swan Bay Environment Association
Queenscliff Community Indigenous Nursery
Point Lonsdale Coastcare
FO Buckley Park

Local Community Environment Groups

- Approx 9 community groups are active in the Southern Bellarine
- BCN support all of these groups and link into projects, schools, landmanagers etc
- There are many other enviro projects and initiatives in this region, this presentation does not explore all of these projects e.g Hooded Plover Project, OBP Working groups etc
- Numerous land managers are relevant to the southern Bellarine and BCN collaborates with them for project outcomes inc; PV, BCCOM, BoQ, COGG, BW, VR, Victrack





Dog Beach Queenscliffe Pre – Erosion control and restoration works 2007



Post- Erosion control and restoration works 2018





Fennell Infestation along BRT



Post weed control and revegetation



Friends of Buckley Park

Landscape Scale Restoration Project

Coastal Moonah Woodland Protection and Enhancement Final Report November 2012

Report Compiled by BCN – Matt Crawley



Funded and Supported By



CARING
FOR
OUR
COUNTRY

Project Area



➤ Schools involved

- Christian College Bellarine – 50 year 9 students
- Point Lonsdale PS – 50 Grade 5 and 6 students
- Ocean Grove PS - 5 Grade 6 students undertaking Our Community work
- Gordon Tafe, Certificate 3 CLM - 20 students
- Brighton Gramma - 40 students

Total Children and students **165 students and 5 schools / institutions**



Christian College Geelong Students



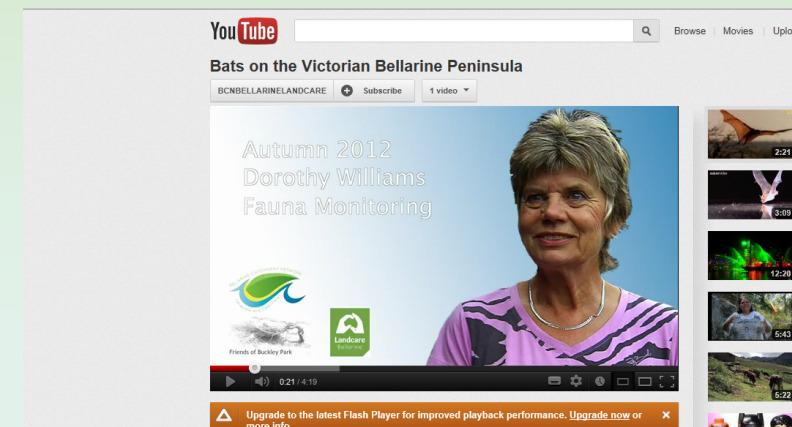
Ocean Grove Primary School



Gordon Tafe CLM Diploma Student

- Four Community groups were engaged as part of the project. These included, Swan Bay Environment Association, Friends of Buckley Park, Bellarine Landcare Group, Geelong Field Naturalists, Bellarine Catchment Network
- 30 volunteers attended community planting day. This provided and an over view of the entire Coastal Moonah Woodland Protection and Enhancement Program and what the project was trying to achieve. A flora and fauna talk was provided and the landscape interpreted
- Fauna Monitoring Educational activity
 - A fauna monitoring day was conducted with 8 community members attending. A walk and talk was provided with the values of the Coastal Moonah Woodland by Trevor Pescott from the Geelong Field Naturalists

<http://www.youtube.com/watch?v=U4IMSEntbU8>



- Pest Plant control activities were engaged over 5 property areas
- Priority weeds controlled included
 - African Boxthorn – Regionally Controlled
 - Boneseed, Regionally Controlled, WONS Weed
 - Blanket Weed, Environmental Weed
 - Tall Wheat Grass, Environmental Weed
 - Apple of Sodom, Environmental Weed
 - Spiny Rush, Regionally Controlled
 - Great Mullein, Regionally Controlled
 - Bridal Creeper, Restricted WONS Weed
- A total area of 15ha of various weeds were controlled
- Revegetation occurred over 4 properties.
- EVC's that were Revegetated included;
 - EVC 9 Coastal Saltmarsh – listed as Vulnerable
 - EVC 858 Coastal Alkaline Scrub – Listed as Endangered
- Total Number of Indigenous Plants – 15,700
- This included overstorey, understorey and grassy ground cover plants
- Total area revegetated = 8.3ha



African Boxthorn



Aerial of Hanley Property Revegetation area

Sub Category: Remnant Habitat Protection

- Each property contained significant remnant habitat values.
- Most this was of EVC 9 and 858.
- One property contained two significant tree species. Bellarine Yellow Gum, a majestic large old growth tree, which seed can be propagated from and Coast Banksia, another large old growth tree
- Both of these species were protected as part of the project and the Coast Banksia, was self seeding in an adjacent area of the paddock which the landholder was protecting.
- Total area remnant protected = 7.9ha

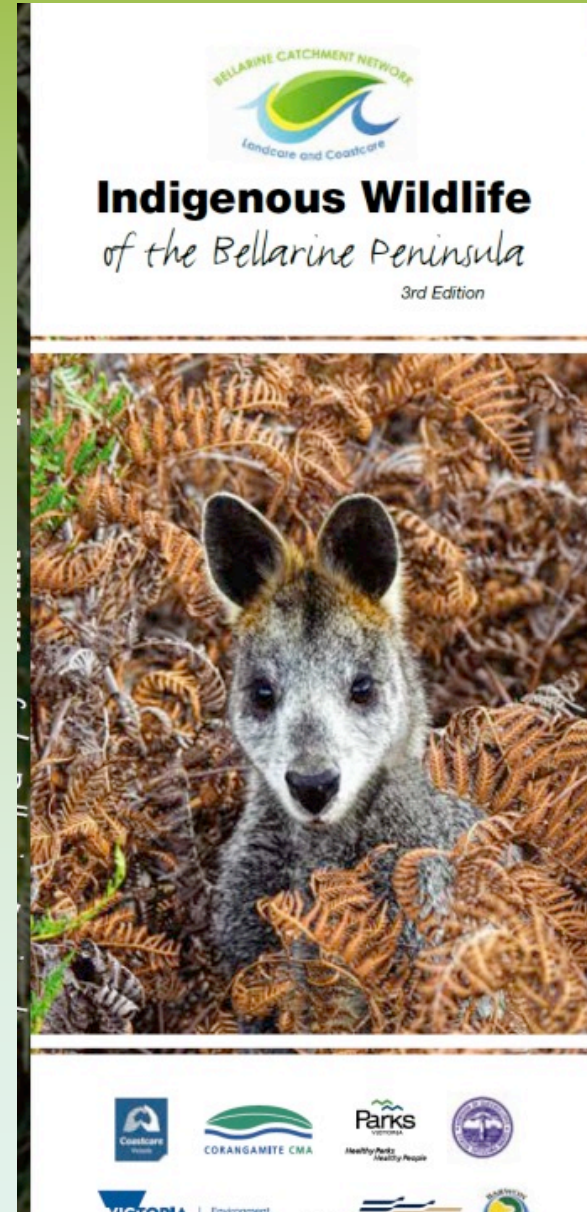


Regeneration and protection of Coastal Banksia from remnant species, adjacent to Lake Victoria





Community Resources, Initiatives and Support



COASTAL PLANTS OF THE BELLARINE PENINSULA

Bellarine Catchment Network



INLAND PLANTS OF THE BELLARINE PENINSULA

Bellarine Catchment Network





GARDENS — FOR — WILDLIFE OCEAN GROVE

Gardens for Wildlife encourages residents to plant indigenous species in part of their garden to provide suitable habitat for local wildlife.

Register now to receive a free, one-hour garden assessment to advise on plants and features that will attract wildlife to your garden.

We will be holding assessments in your area on

To register for a free assessment go to:
environmentbellarine.eventbrite.com

For further information contact us on:
email: lachlan.bcn@environmentbellarine.org.au or call Lachlan on 0422 031 883



Ocean Grove & Point Lonsdale Surf Life Saving Club – Nippers Program





Summer By the Sea Program

Report and Results Compiled March 2015 Compiled by BCN – Matt Crawley



Funded and Supported By





L to R: Coastcare Environment Challenge Course at Portarlington, St Leonards Community Engagement, Rockpool Ramble and Beachcomb Indented Head



Bellarine Schools Environment Program



Bellarine Catchment Network ~ Schools Environment Program



School	Program Est	Project and Site	Project Partners	Annual Student No	Accumulated Student No
Bellarine Secondary College (BSC) Yr 8 Environment Day	2005	BSC Junior Campus – multiple lessons and classes, both on and off campus	Jointly led with BCCOM. Also, BCN, MFDC, CCMA, PV, CoGG, BLG, etc	200	2000
BSC Yr 12 Outdoor Ed	2012	Narrows QC – Woody weed removal, study and research	BCN, BoQ, SBEA	50	200
Clifton Springs PS	2012	The Dell – Environment Day reveg, restoration and enviro education	BCN, CoGG, DCSCA, CCMA,	100	200
Drysdale PS	2012	The Dell – Environment Day reveg, restoration and enviro education	BCN, CoGG, DCSCA, CCMA,	100	200
Star of the Sea PS	2005	Bonnyvale Wetlands – Wetlands Environment day, revegetation, WaterWatch, e	BCN, CCMA, CoGG,	50	500
St Aloysius PS	2015	Swan Bay Caring for Swan Bay Environment Day	BCN, BoQ, CCMA, PV, SBEA	100	200
St Ignatius Secondary College	2015	The Basin Drysdale	BCN, CoGG, BLG	30	60
Ocean Grove PS	2009	Ocean Grove Coastcare Day – Ocean Grove Foreshore, Challenge Course, Fauna Talk, Leaf Hopper Release	BCN, OGCC, BCCOM	90	540
Point Lonsdale PS	2014	Point Lonsdale Foreshore Caring for the Bay Day, Coastcare Challenge Course, Revegetation, Connies Cards	BCN, BoQ, PLCCG	400 in 2015 90 annually	490
Queenscliffe PS	2010	Bellarine Rail Trail Revegetation Fellows Rd	BCN, SBEA, BoQ	10 students annually	50
Christian College Geelong	2012	Narrows QC – Woody weed removal, study and research	BCN, BoQ, SBEA	150 in 2015 50 annually	300
St Leonards PS	2005	Leaf Hooper Growing and Release New Program with BBCOM Foreshore Coastcare Day	BCN, BBCOM, PV, FOEP		200
Portarlington PS	2016	New Program with BBCOM Foreshore Coastcare Day	BCN, BBCOM, FOPR	80	
Brighton Grammar	2012	Narrows QC – Woody weed removal, study and research	BCN, BoQ, SBEA	50	200
Gordon Tafe	2009	Queenscliffe Moonah Woodland Restoration and revegetation	BCN, BoQ, SBEA	30	180
Deakin University – Coastal Management Degree Course	2008	Catchment and Coastal Tour	BCN	60	420
St Olaf University America	2008	Catchment and Coastal Tour	BCN, MFDC	50	250
Total				1,140	5,990



Point Lonsdale Primary School Environment Day Report

Wednesday the 29th of August 2018



Point Lonsdale Primary School, Bellarine Catchment Network, Parks Victoria and Swan Bay Environment Association were welcomed by a sunny end to winter for our annual environment day.

Students enjoyed three activities; a beachcomb facilitated by Parks Victoria, a Coastal Moonah Woodland flora & fauna walk guided Swan Bay Environment Association and lastly the Coastcare Environment Challenge Course hosted by Bellarine Catchment Network.

Students rotated through the each activity to learn about what inhabits Point Lonsdale's natural areas and how to reduce their impacts on these areas.



Point Lonsdale students learning about what lives in the intertidal zone with Nick from Parks Victoria (left) and students enjoying the days activities (right).

Groups	Activities	Figures
<ul style="list-style-type: none">Point Lonsdale Primary SchoolParks VictoriaSwan Bay Environment AssociationBellarine Catchment Network	<ul style="list-style-type: none">BeachcombCoastal Moonah Woodland walk and talkCoastcare Environment Challenge Course	<ul style="list-style-type: none">45 Students2 Teachers1 BCN Staff2 Parks Victoria Staff1 Swan Bay Environment Association member



St Aloysius Primary School Environment Day Report

Thursday the 2nd of August 2018

St Aloysius Primary School and Bellarine Catchment Network were welcomed by a sunny winters day at the foreshore of Swan Bay. Students, teachers and parents enjoyed a morning of planting, propagation and learning about their local ecosystem, *Coastal Moonah Woodland*.

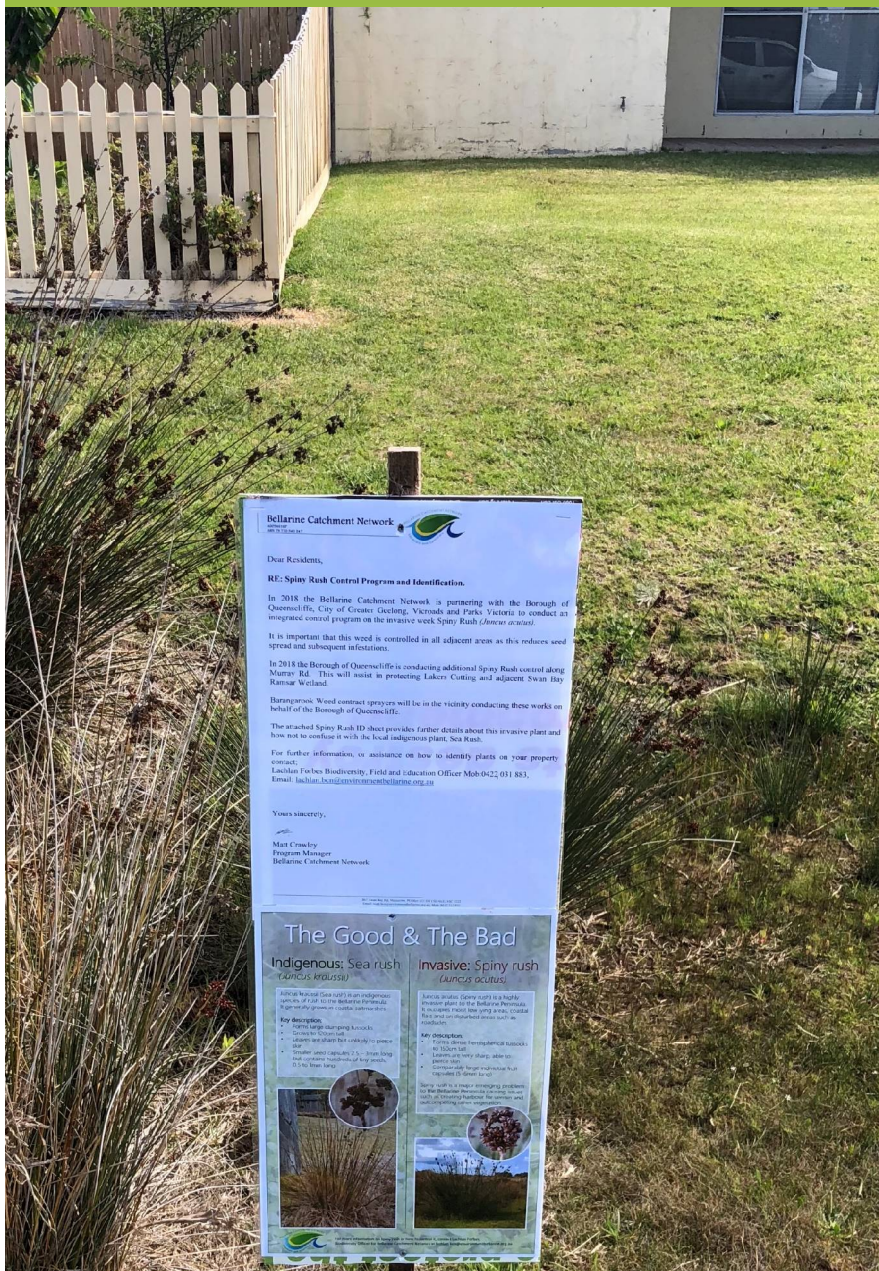


St Aloysius students learning about what makes a healthy Coastal Moonah Woodland (left) and revegetating the woodland by planting indigenous species (right).

Groups	Activities	Figures
-St Aloysius Primary School Students, Teachers and Parents	<ul style="list-style-type: none">Propagation of indigenous plantsRevegetation of coastal woodlandEcosystem talk and activity	<ul style="list-style-type: none">45 Students3 Teachers2 BCN Staff2 Parent helpers200 plants planted300 plants propagated



POINT LONSDALE SPINY RUSH CONTROL 2018



Bellarine Catchment Network
 08 6322 0111
 www.bcn.org.au

Dear Residents,

RE: Spiny Rush Control Program and Identification.

In 2018 the Bellarine Catchment Network is partnering with the Borough of Queenscliffe, City of Greater Geelong, Victorian and Parks Victoria to conduct an integrated control program on the invasive weed Spiny Rush (*Juncus acutus*).

It is important that this weed is controlled in all adjacent areas as this reduces seed spread and subsequent infestations.

In 2018 the Borough of Queenscliffe is conducting additional Spiny Rush control along Murray Rd. This will assist in protecting Lakens-Cutting and adjacent Swan Bay Ramsar Wetland.

Barramens Wood contract sprayers will be in the vicinity conducting these works on behalf of the Borough of Queenscliffe.

The attached Spiny Rush ID sheet provides further details about this invasive plant and how not to confuse it with the local indigenous plant, Sea Rush.

For further information, or assistance on how to identify plants on your property, contact:
 Lachlan Forbes Biodiversity Field and Education Officer Mob 0422 011 883,
 Email: lachlan.bcn@environmentbellarine.org.au

Yours sincerely,
 Matt Crowley
 Program Manager
 Bellarine Catchment Network

The Good & The Bad

Indigenous: Sea rush
(Juncus kraussii)

Invasive: Spiny rush
(Juncus acutus)

Key description:

- Forms large clumping tussocks
- Grows to 120cm tall
- Leaves are sharp but unlikely to pierce skin
- Smaller seed capsules 2.5 – 3mm long but contains hundreds of tiny seeds, 0.5 to 1mm long

Key description:

- Forms dense hemispherical tussocks to 150cm tall
- Leaves are very sharp, able to pierce skin
- Comparably large individual fruit capsules (5-6mm long)

Spiny rush is a major emerging problem to the Bellarine Peninsula causing issues such as creating harbour for vermin and outcompeting other vegetation.

The Good & The Bad

Indigenous: Sea rush *(Juncus kraussii)*

Juncus kraussii (Sea rush) is an indigenous species of rush to the Bellarine Peninsula. It generally grows in coastal saltmarshes.

Key description:

- Forms large clumping tussocks
- Grows to 120cm tall
- Leaves are sharp but unlikely to pierce skin
- Smaller seed capsules 2.5 – 3mm long but contains hundreds of tiny seeds, 0.5 to 1mm long



Invasive: Spiny rush *(Juncus acutus)*

Juncus acutus (Spiny rush) is a highly invasive plant to the Bellarine Peninsula. It occupies moist low lying areas, coastal flats and on disturbed areas such as roadsides.

Key description:

- Forms dense hemispherical tussocks to 150cm tall
- Leaves are very sharp, able to pierce skin
- Comparably large individual fruit capsules (5-6mm long)

Spiny rush is a major emerging problem to the Bellarine Peninsula causing issues such as creating harbour for vermin and outcompeting other vegetation.



For more information on Spiny rush or how to control it, contact Lachlan Forbes, Biodiversity Officer for Bellarine Catchment Network at lachlan.bcn@environmentbellarine.org.au



Bellarine Community Environmental Works Trailer



CARING FOR OUR BAYS

LEAVE NOTHING BUT FOOTPRINTS

1. Support the implementation of best practice litter prevention projects
2. Develop and support partnerships to increase the capacity of organisations to implement litter prevention programs
3. Improve personal responsibility for litter disposal and prevention.
4. Improve the amenity of public spaces that impact upon the water quality of Corio and Western Port Phillip Bays.

Caring For Our Bays

Litter Hotspots



Site Locations 2018/19	
1	Hovells Creek
2	Cuthbertsons Creek
3	Cowies Creek Seagull Paddock
4	St Helens Pier
5	Cunningham Pier
6	Limeburners Boat Ramp
7	Clifton Springs Boat Ramp
8	Point Richards
9	Portarlington Pier
10	St Leonards Pier
11	Burnt Point
12	Queenscliff Ferry Terminal
13	Officeworks Geelong
14	Indented Head Wrathall Reserve
15	Cowies Creek Peacock Avenue

Be a local hero

Put your rubbish in a bin

Helpful Frogs

Frogs are an indicator species that help to show when pollutants threaten a local ecosystem.

Source: 6ix.com

Food Chain Plastic
Plastics are not biodegradable. They break down into smaller pieces that can be consumed by fish, which are eaten by humans.

Source: healthywaterways.org

Most rubbish reaches seas via waterways and

80%
originates from urban sources.

Source: seefutures.org

Growling Grass Frog



Litoria raniformis

Growling Grass Frogs live amongst reeds, sedges and rushes growing beside slow flowing freshwater sources such as swamps and wetlands. Their distinctive call of several short grunts followed by a long deep 'growl' can be heard during the warmer months. They feed mainly on ground dwelling insects, but are also known to eat lizards, snakes and other frogs.

Small Starts

Like all frogs, they start life as tadpoles. Growling Grass Frog tadpoles can grow to 10cm in length before turning into frogs.



Tadpoles play an important part in the food chain for many species including fish.

Stealth Hunters

They are not active hunters, instead they sit and wait for their prey to come to them.



Did you know?

The Growling Grass Frog is a threatened species under the Victorian Flora and Fauna Guarantee Act 1988

Help us to protect our unique local species, keep Geelong and the Bellarine clean.

www.environmentbellarine.org.au



Australian Fur Seal

Arctocephalus pusillus

Australian fur seals are acrobats of the ocean, but they also need land to rest on. A very social animal often seen playing with each other.

Inquisitive by nature, rubbish is seen as a toy often leading to life threatening injuries through entanglement or ingestion. They feed on a variety of fish, squid and octopus. Seals are a top order predator of Port Phillip and Corio bay.



Deep Divers

The Australian Fur seal can dive to depths of 200m to catch fish and squid.



Not a true seal

Fur seals are different from true seals (such as Elephant Seals) because they have external ears and can use all four limbs to move across land.

Be a local hero

Put your rubbish in a bin

Wire worry

Discarded fishing line is one of the biggest threats to seals. They become entangled and die.

Source: huffree.org.au



Litter Magnets

Litter attracts more litter. When an area looks dirty and uncared for, people tend to litter more. In contrast, people are more reluctant to litter clean areas.

Source: litter.vic.gov.au

Did you know?

95% of the litter on beaches comes from suburban streets through the stormwater system.

Source: litter.vic.gov.au

Help us to protect our unique local species, keep Geelong and the Bellarine clean.

www.environmentbellarine.org.au



Be a local hero...



Australasian Gannet

Growling Grass Frog

Australian Fur Seal

Banjo Ray

Weedy Seadragon

Eleven-armed Seastar

Angasi Oyster

Burrannun Dolphin

Festivals and Events

Including the following:

- Queenscliff Music Festival
- Portarlington Mussel Festival
- National Celtic Festival
- Pakofest
- Festival of the Sails Geelong
- Geelong Ironman Festival
- Wreck to Reef Swim
- Rip View Swim
- Moorpanyul 1000 Swim
- Geelong Ironman
- Portarlington Gatorade Triathlon
- North Geelong SKART Festival (Art and Skating)
- Festival of the Sea



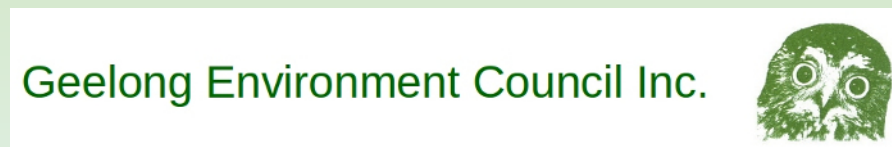
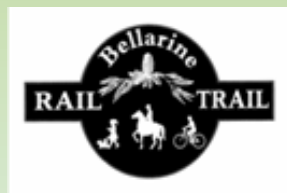
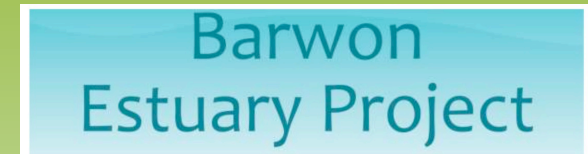
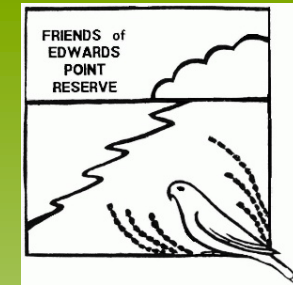
Sporting Events and Reducing Waste

Rip View Swim Point Lonsdale



Wreck to Reef Swim Indented Head







Ringtail Possum in drey – Ocean Grove

THE CLOSER YOU LOOK
THE MORE YOU DISCOVER

For further information contact:

Matt Crawley

Program Manager

Bellarine Catchment Network

Mob: 0417 231 853

Email: matt@environmentbellarine.org.au

Web: <http://www.environmentbellarine.org.au/>

